

la  
imagen  
de tu  
empresa







# CREAMOS UNIFORMES

a la medida de tu empresa,  
con la mejor calidad y  
precio.



ESTOS SON ALGUNOS DE NUESTROS CLIENTES

---








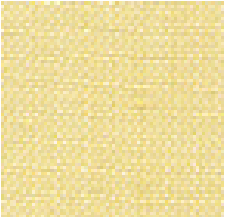
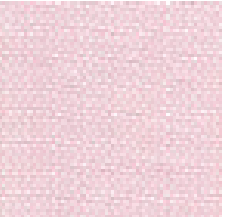
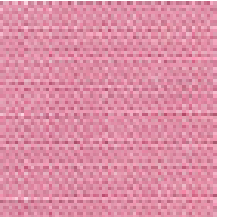
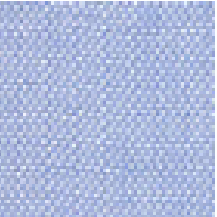
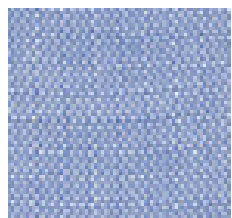
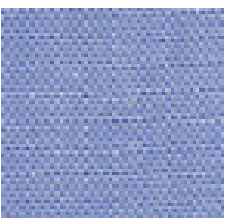
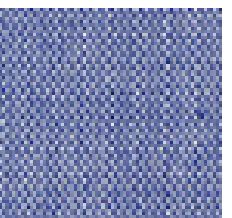
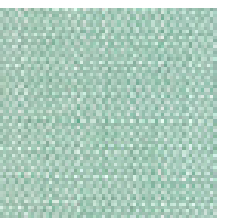
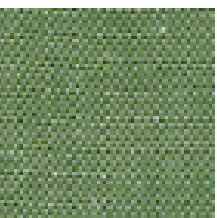
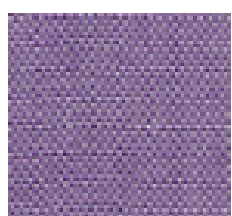
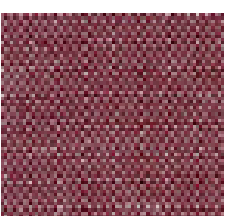
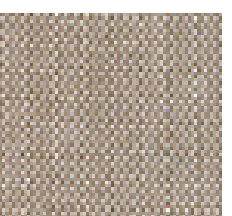
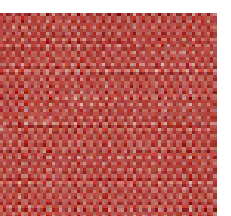
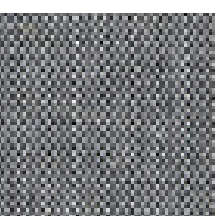
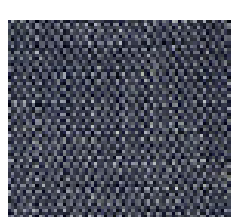
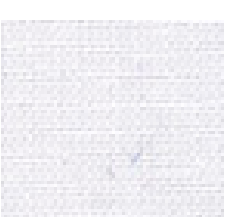
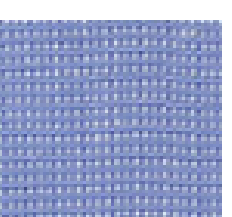
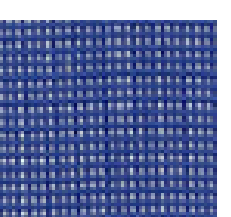
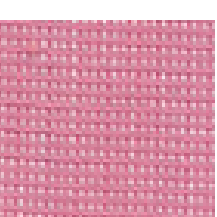
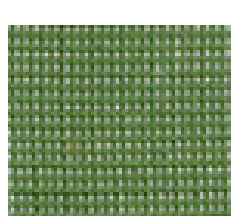
# CORPORATIVO





## CAMISAS Y BLUSAS OXFORD

60% algodón 40% polyester

				
Blanco White 00001-06	Amarillo Yellow 00001-05	Palo de Rosa Pale Pink 00001-04	Rosa Pink 00002-12	Azul Claro Baby Blue 00001-01
				
Azul Cielo Sky Blue 00001-02	Azul Celeste Celestial Blue 00002-01	Azul Imperial Imperial Blue 00001-03	Menta Mint 00001-09	Verde Pasto Grass Green 00002-08
				
Lila Lilac 00002-14	Cereza Cherry 00002-16	Arena Sand 00001-08	Ladrillo Brick 00002-17	Gris Oxford Charcoal 00001-10
				
Marino Navy 00002-04	Blanco Óptico Optic White 00001-12	Azul Zafiro Sapphire Blue 00004-02	Azul Francia French Blue 00004-03	Rosa Flamenco Flamingo Pink 00004-12
				
Verde Cactus Cactus Green 00004-08				

# DREXSA

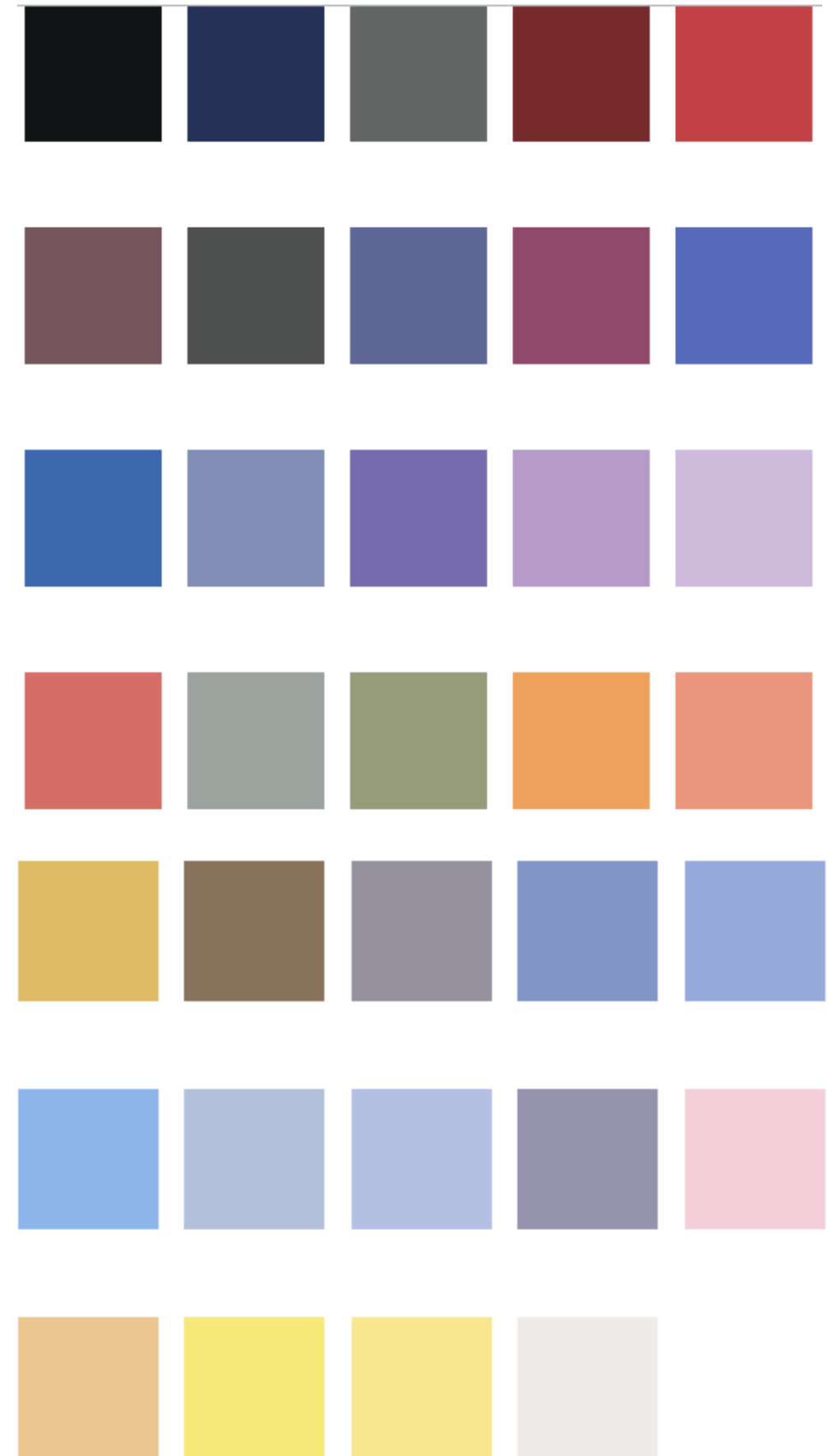
UNIFORMES EMPRESARIALES





## CAMISAS Y BLUSAS PREMIUN

51% algodón 49% polyester



**DREXSA**  
UNIFORMES EMPRESARIALES





**CAMISAS Y BLUSAS AMBASSADOR**

70%POLYESTER 30%ALGODÓN







**RAYAS Y CUADROS**  
DIFERENTES COMPOSICIONES

**DREXSA**  
UNIFORMES EMPRESARIALES





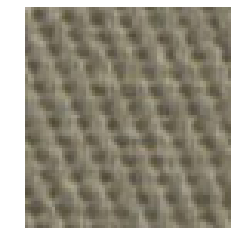
## PANTALONES



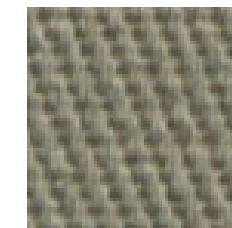
Blanco  
White 0001



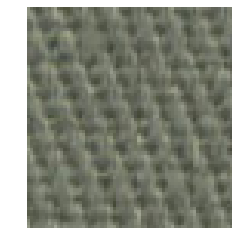
Arena  
Sand 0059



Beige  
Biege 0037



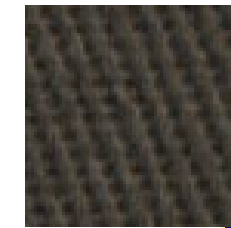
Khaky  
Khaky 0005



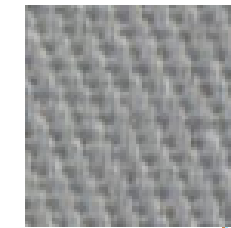
Militar  
Pale 0043



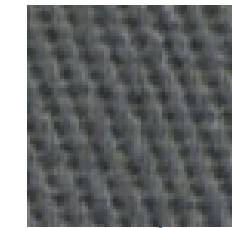
Olivo  
Olive 0053



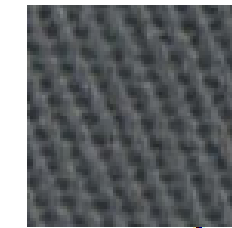
Café  
Brown 0006



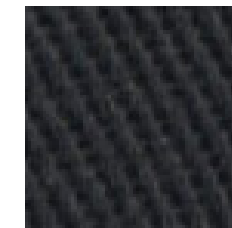
Gris Perla  
Lunar Gray  
0038



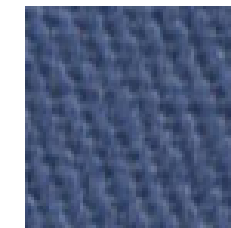
Gris Oscuro  
Dark Grey  
0030



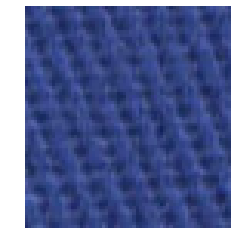
Gris Oxford  
Charcoal 4780



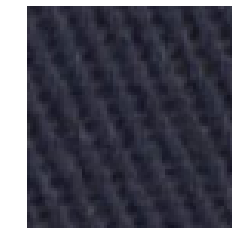
Negro  
Black 6100



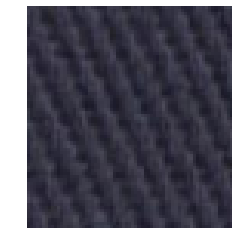
Azul Acero  
Steel Blue 0047



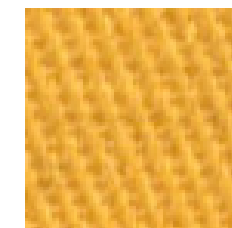
Azul Rey  
Royal Blue  
0008



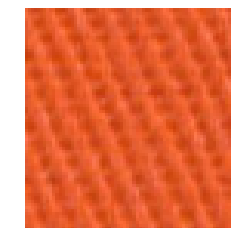
Marino  
Navy 0009



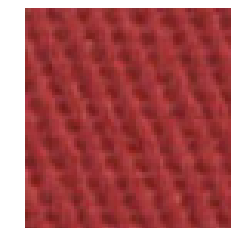
Marino Intenso  
Dark Navy  
8709



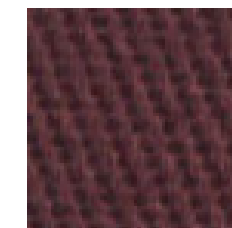
Mango  
Mango 0023



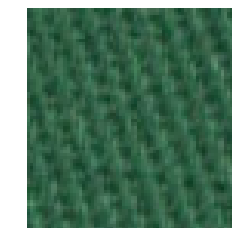
Naranja  
Tangerine 7370



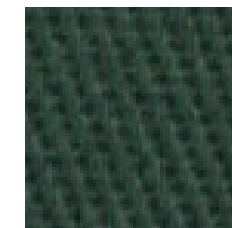
Rojo  
Red 0012



Vino  
Burgundy 0007



Verde  
Green 0224



Verde Botella  
Dark Green  
0011

## GABARDINAS

100% ALGODÓN

60%ALGODÓN 40% POLYESTER

80%POLYESTER 20% ALGODÓN

# DREXSA

UNIFORMES EMPRESARIALES





**INDUSTRIAL**





# CAMISOLA

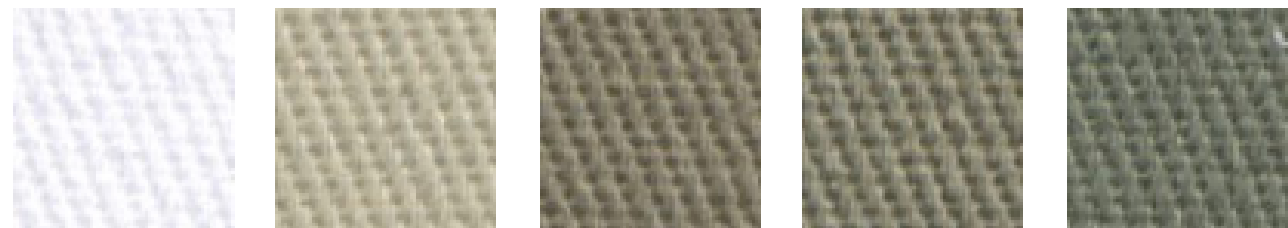
 Blanco White 0001	 Arena Sand 0059	 Beige Biege 0037	 Khaky Khaky 0005	 Militar Pale 0043
 Olive Olive 0053	 Café Brown 0006	 Gris Perla Lunar Gray 0038	 Gris Oscuro Dark Grey 0030	 Gris Oxford Charcoal 4780
 Negro Black 6100	 Azul Acero Steel Blue 0047	 Azul Rey Royal Blue 0008	 Marino Navy 0009	 Marino Intenso Dark Navy 8709
 Mango Mango 0023	 Naranja Tangerine 7370	 Rojo Red 0012	 Vino Burgundy 0007	 Verde Green 0224
 Verde Botella Dark Green 0011				

**GABARDINAS**  
 100% ALGODÓN  
 60%ALGODÓN 40% POLYESTER  
 80%POLYESTER 20% ALGODÓN





BATAS



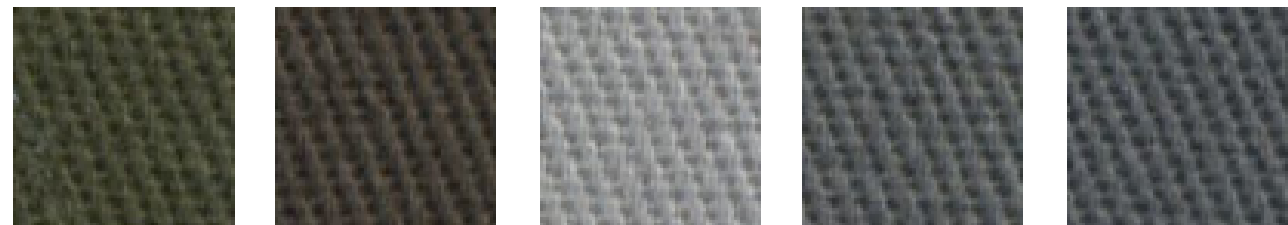
Blanco  
White 0001

Arena  
Sand 0059

Beige  
Biege 0037

Khaky  
Khaky 0005

Militar  
Pale 0043



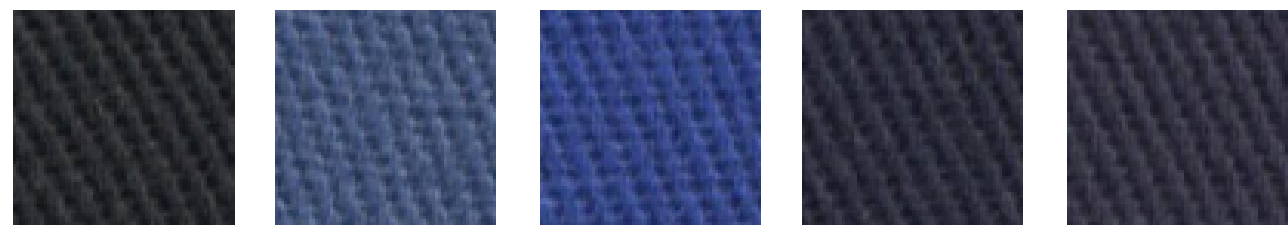
Olivo  
Olive 0053

Café  
Brown 0006

Gris Perla  
Lunar Gray  
0038

Gris Oscuro  
Dark Grey  
0030

Gris Oxford  
Charcoal 4780



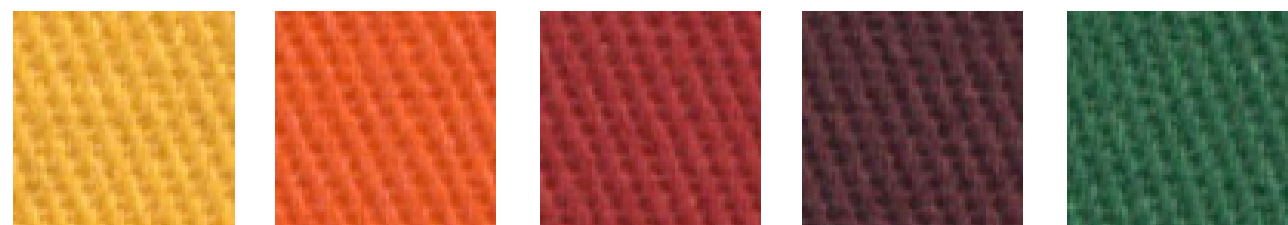
Negro  
Black 6100

Azul Acero  
Steel Blue 0047

Azul Rey  
Royal Blue  
0008

Marino  
Navy 0009

Marino Intenso  
Dark Navy  
8709



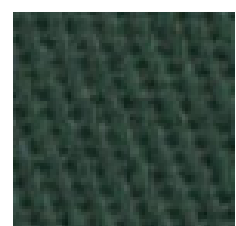
Mango  
Mango 0023

Naranja  
Tangerine 7370

Rojo  
Red 0012

Vino  
Burgundy 0007

Verde  
Green 0224



Verde Botella  
Dark Green  
0011

**GABARDINAS**

100% ALGODÓN

60%ALGODÓN 40% POLYESTER

80%POLYESTER 20% ALGODÓN

**DREXSA**

UNIFORMES EMPRESARIALES





# OVEROLES


## GABARDINAS

100% ALGODÓN

60%ALGODÓN 40% POLYESTER

80%POLYESTER 20% ALGODÓN

# DREXSA

UNIFORMES EMPRESARIALES





# PANTALÓN CARGO

 Blanco White 0001	 Arena Sand 0059	 Beige Biege 0037	 Khaky Khaky 0005	 Militar Pale 0043
 Olivo Olive 0053	 Café Brown 0006	 Gris Perla Lunar Gray 0038	 Gris Oscuro Dark Grey 0030	 Gris Oxford Charcoal 4780
 Negro Black 6100	 Azul Acero Steel Blue 0047	 Azul Rey Royal Blue 0008	 Marino Navy 0009	 Marino Intenso Dark Navy 8709
 Mango Mango 0023	 Naranja Tangerine 7370	 Rojo Red 0012	 Vino Burgundy 0007	 Verde Green 0224
 Verde Botella Dark Green 0011				

**GABARDINAS**  
100% ALGODÓN  
60%ALGODÓN 40% POLYESTER  
80%POLYESTER 20% ALGODÓN

**DREXSA**  
UNIFORMES EMPRESARIALES





SEGURIDAD

DREXSA  
UNIFORMES EMPRESARIALES





**MEZCLILLA**  
14 Oz.  
7.5 Oz.



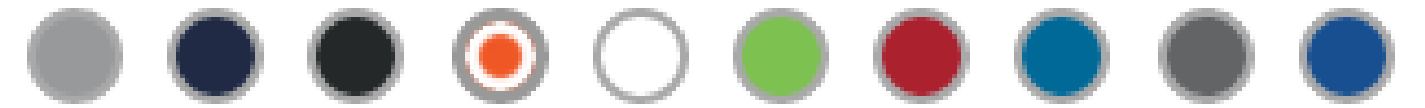
**DREXSA**  
UNIFORMES EMPRESARIALES





# PLAYERAS





ALGUNAS MARCAS CON LAS QUE  
TRABAJAMOS

**GILDAN**<sup>®</sup>



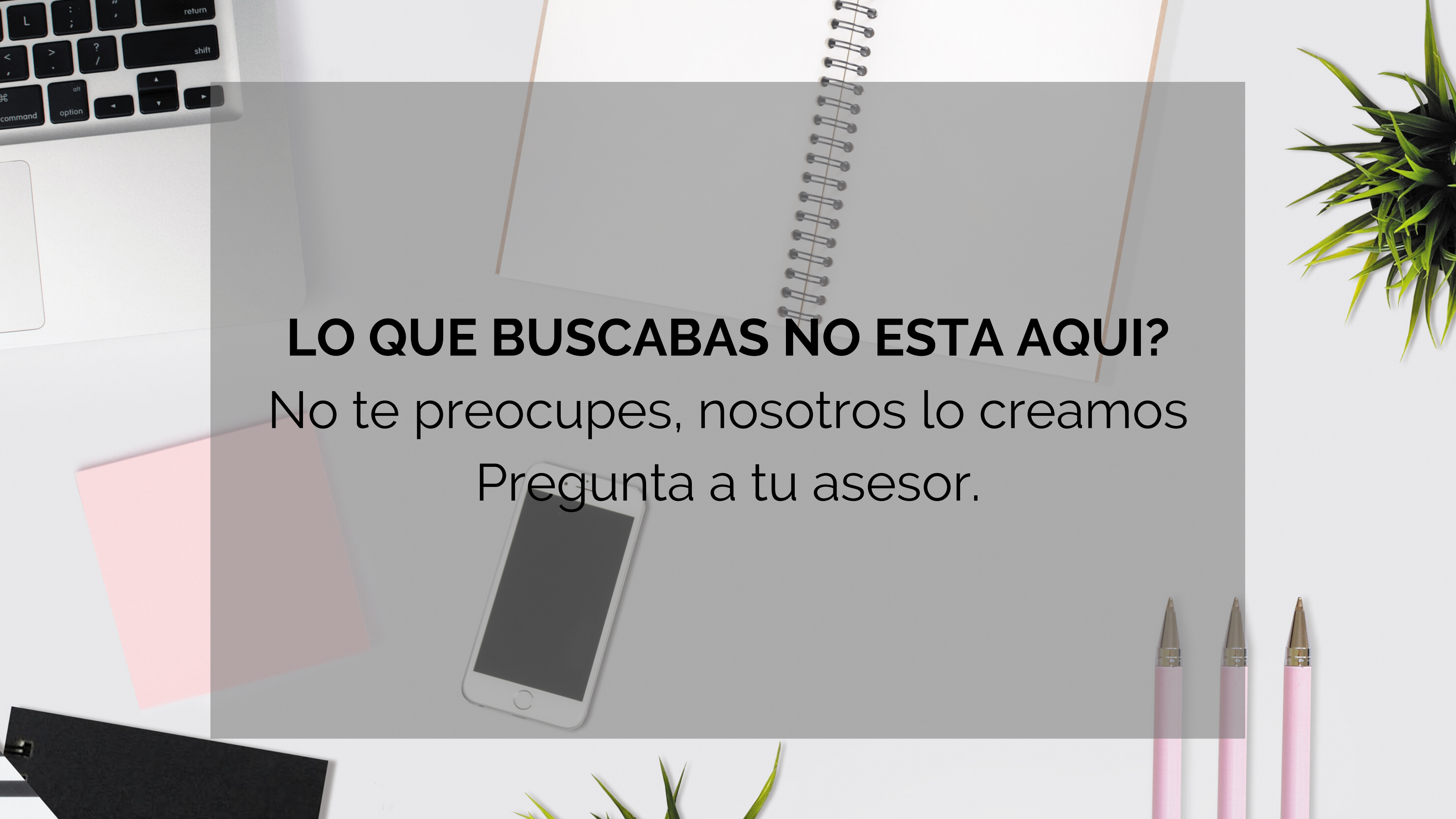
**Optima**<sup>®</sup>



**DREXSA**

UNIFORMES EMPRESARIALES



A top-down view of a desk with various items: a laptop keyboard on the left, a spiral notebook in the upper center, a smartphone in the lower center, three pink pens at the bottom right, and green plants in the corners. A semi-transparent grey rectangle is overlaid in the center, containing text.

**LO QUE BUSCABAS NO ESTA AQUI?**  
No te preocupes, nosotros lo creamos  
Pregunta a tu asesor.





33-17-09-93-93

WWW.UNIFORMESDREXSA.COM

